

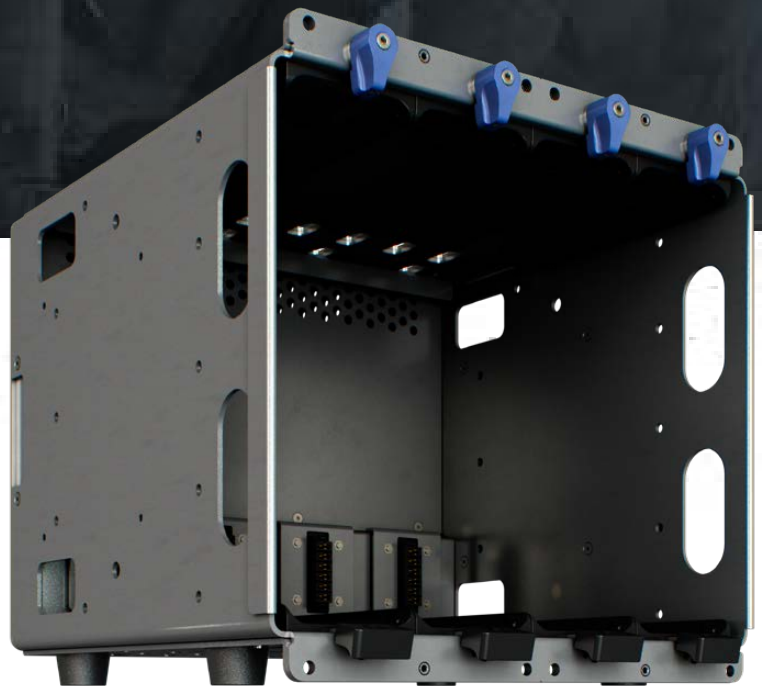
VOYAGER/4

Voyager 4 is a lightweight chassis with space for up to four Voyager modules with or without a Voyager 1 battery pack attached.

The Voyager 4 has multiple point points to enable vehicle installations and can also be DIN rail mounted and powered.

KEY FEATURES

- Support for up to four Voyager modules including Voyager 1 battery packs if attached.
- Multiple mounting options with mounting holes on the front, rear and sides of the chassis.
- Lightweight aluminum construction.
- DC input connector for connecting a 12 VDC power source. Ensure that the input power matches the power rating of the Voyager modules installed in the chassis.
- PoE power input connector for connecting a separate 48 VDC PoE power source.



Portable



Rugged



Low Power

EMEA:

Klas,
4th Floor, One Kilmainham Square,
Inchicore Road, Kilmainham,
Dublin 8, Ireland
DO8 ETIW.
Tel: +353 1 6624270

US

Klas Government
450 Springpark Place,
Suite 1200,
Herndon, VA 20170
Tel: +1 571-375-2500

www.klasgroup.com

KLAS

VOYAGER/4

Specifications



PHYSICAL SPECIFICATIONS

- 10.2" W x 9.1" D x 9.1" H (258mm W x 232.5mm D x 232.5mm H)
- 5.5 lb (2.5 kg)

ELECTRICAL SPECIFICATIONS

DC Input

- 12 VDC (ensure the supplied power does not exceed the input power rating of the installed Voyager modules)

PoE Input

- 48 VDC PoE power input to supply PoE power to Voyager modules that support PoE.

CONSTRUCTION

- Aluminum chassis



EMEA:

Klas,
4th Floor, One Kilmainham Square,
Inchicore Road, Kilmainham,
Dublin 8, Ireland
D08 ETIW.
Tel: +353 1 6624270

US

Klas Government
450 Springpark Place,
Suite 1200,
Herndon, VA 20170
Tel: +1 571-375-2500

www.klasgroup.com

KLAS